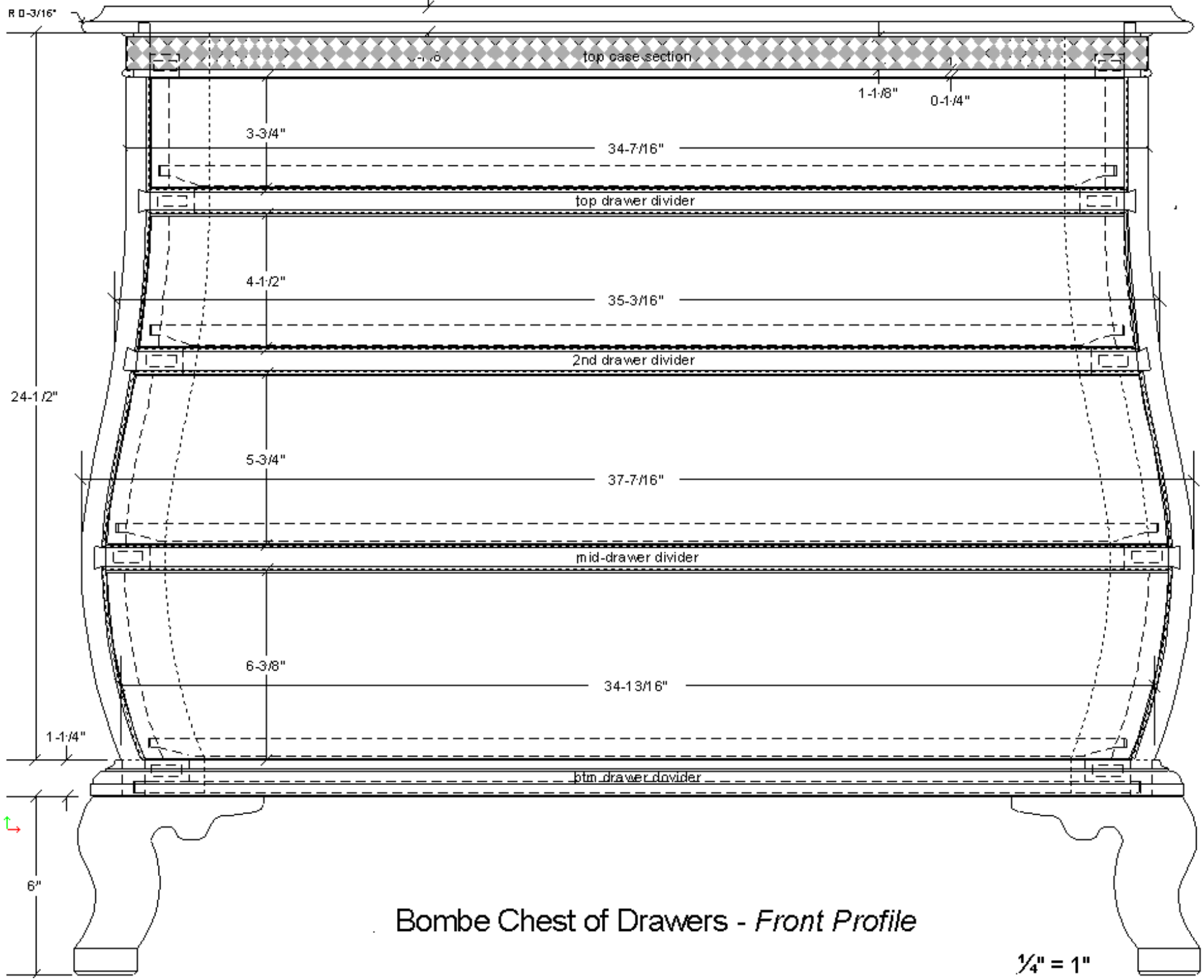
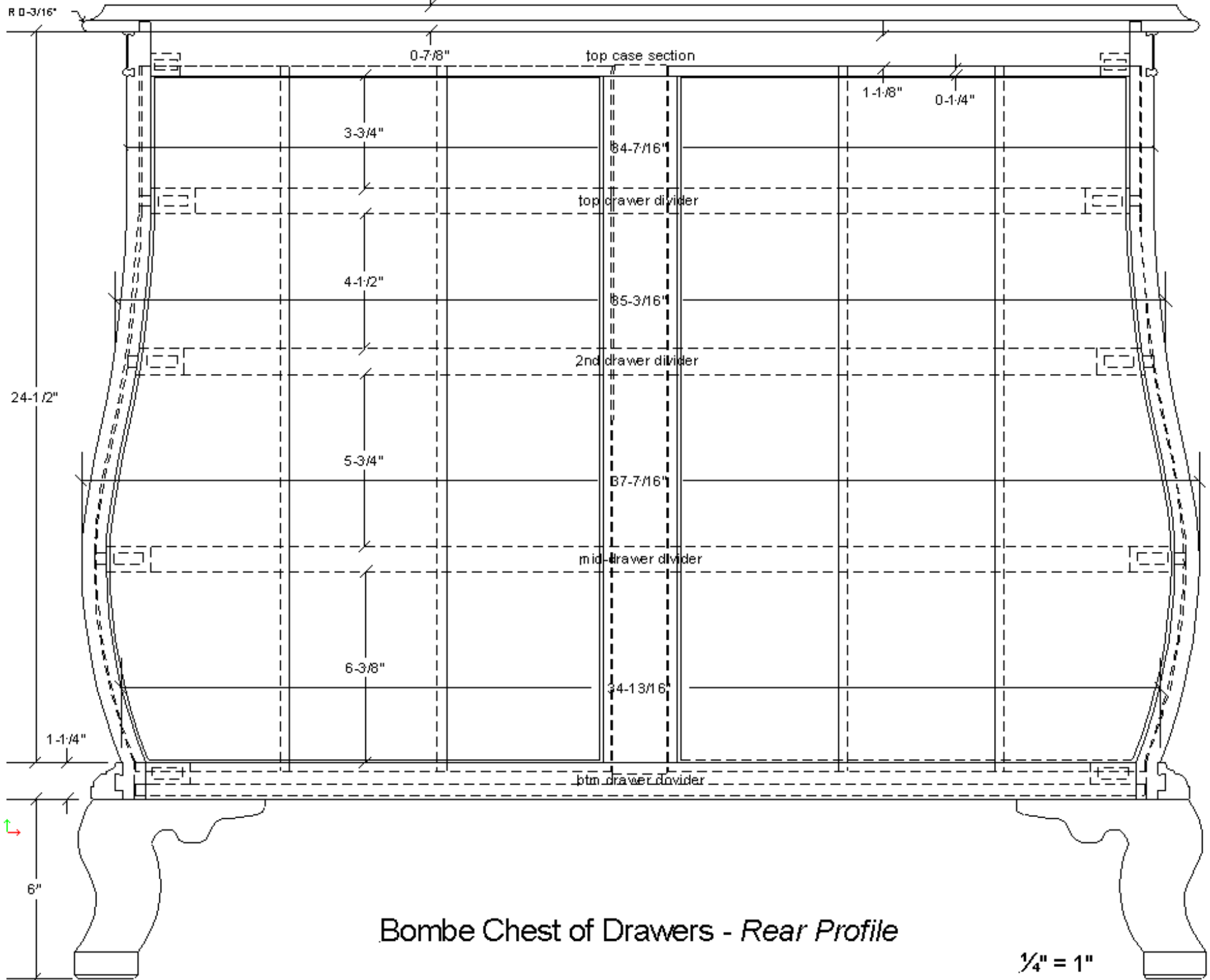


Bombe Chest of Drawers - Side Profile

1/4" = 1"

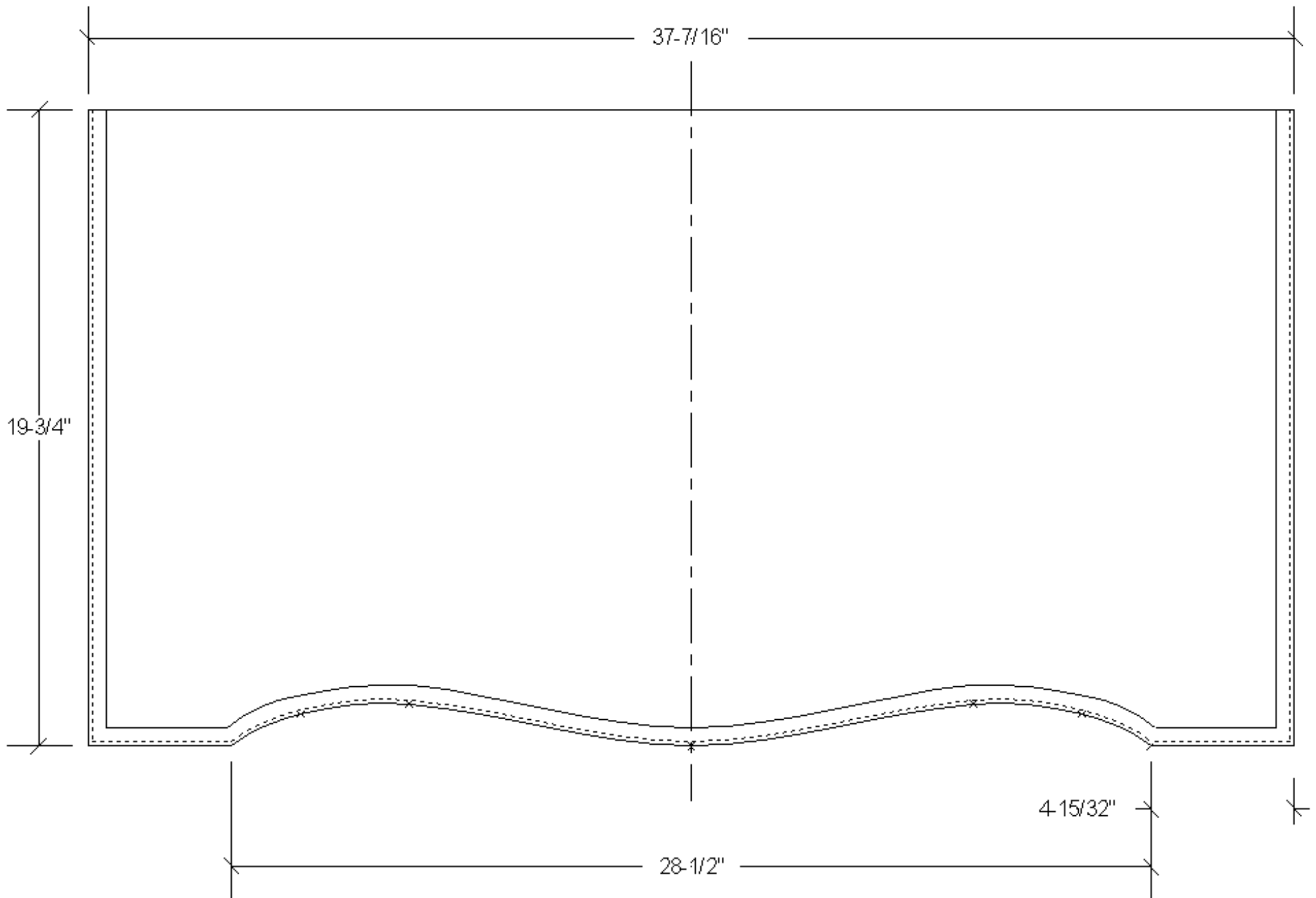


Bombe Chest of Drawers - *Front Profile*



Bombe Chest of Drawers - *Rear Profile*

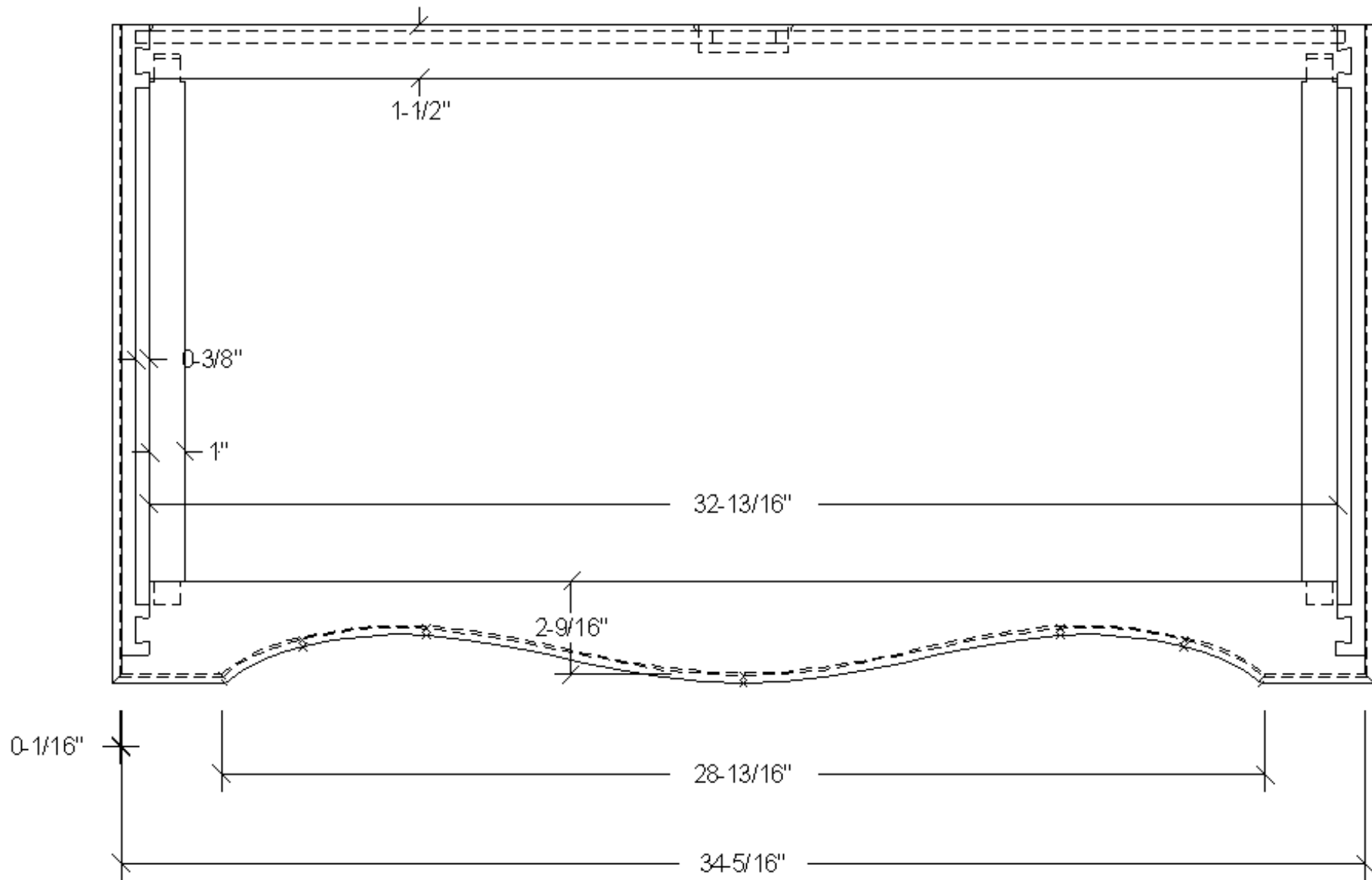
1/4" = 1"



Bombe Chest of Drawers - *Top Profile*

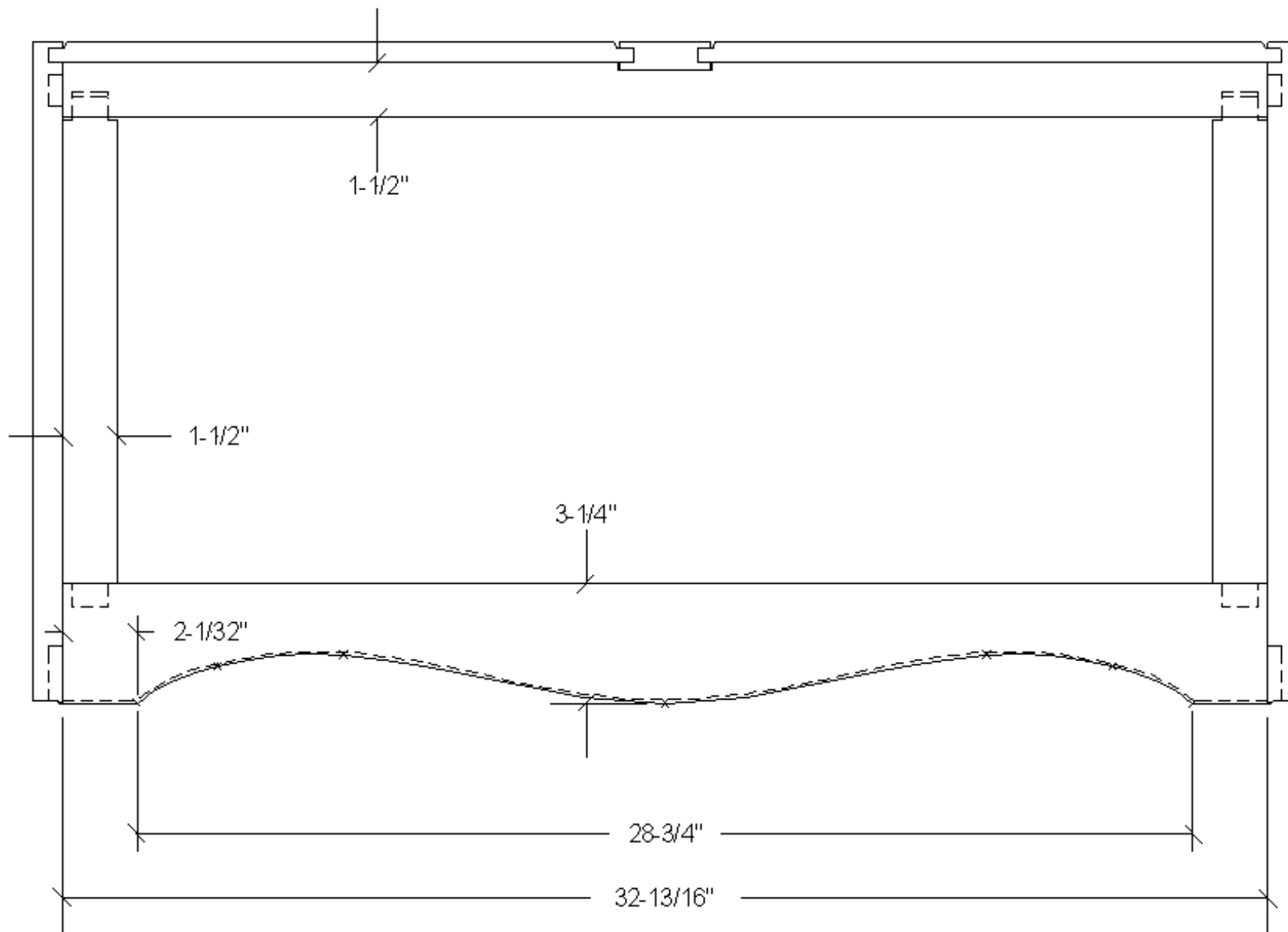


1/4" = 1"



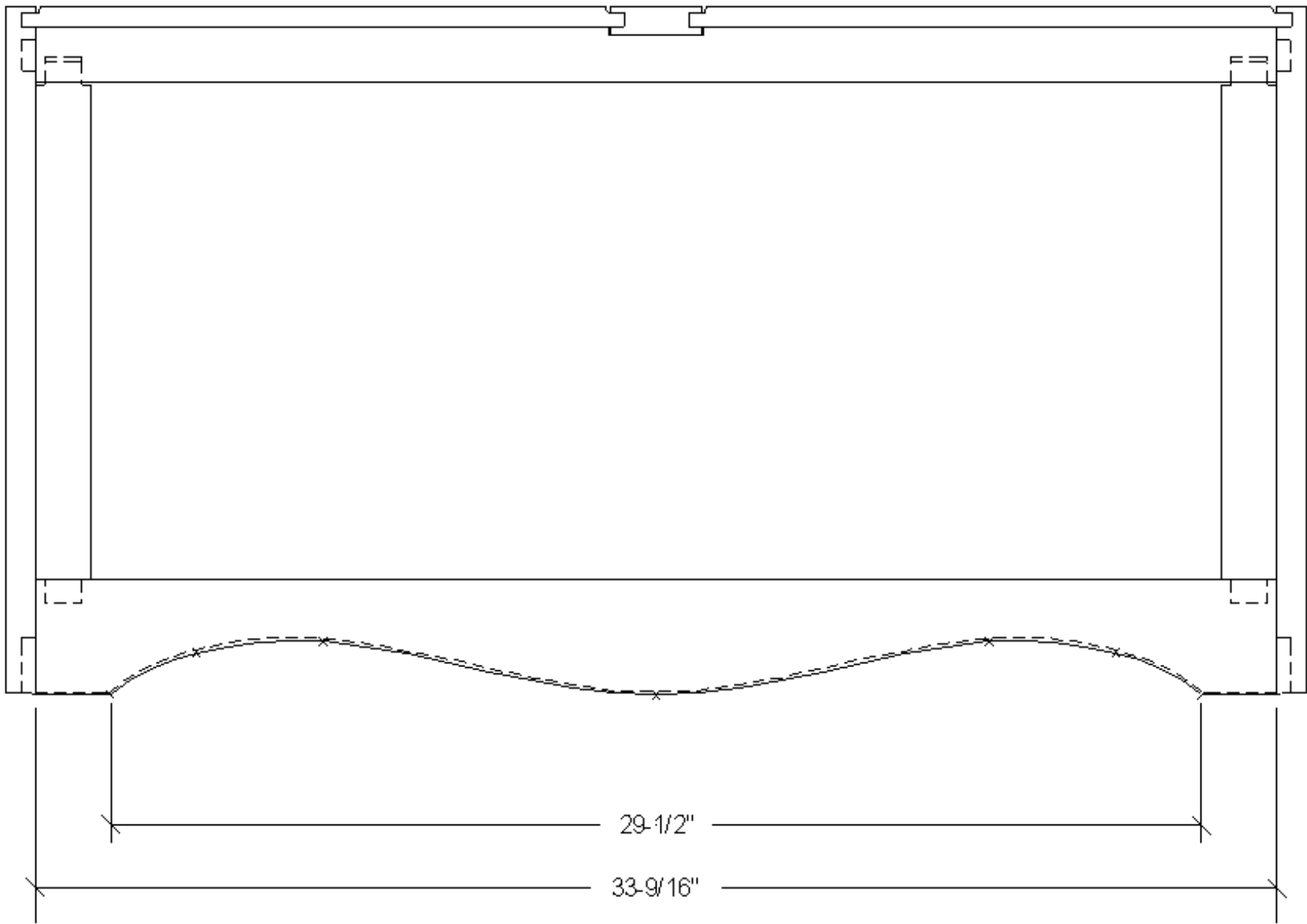
Bombe Chest of Drawers - Top Case Section





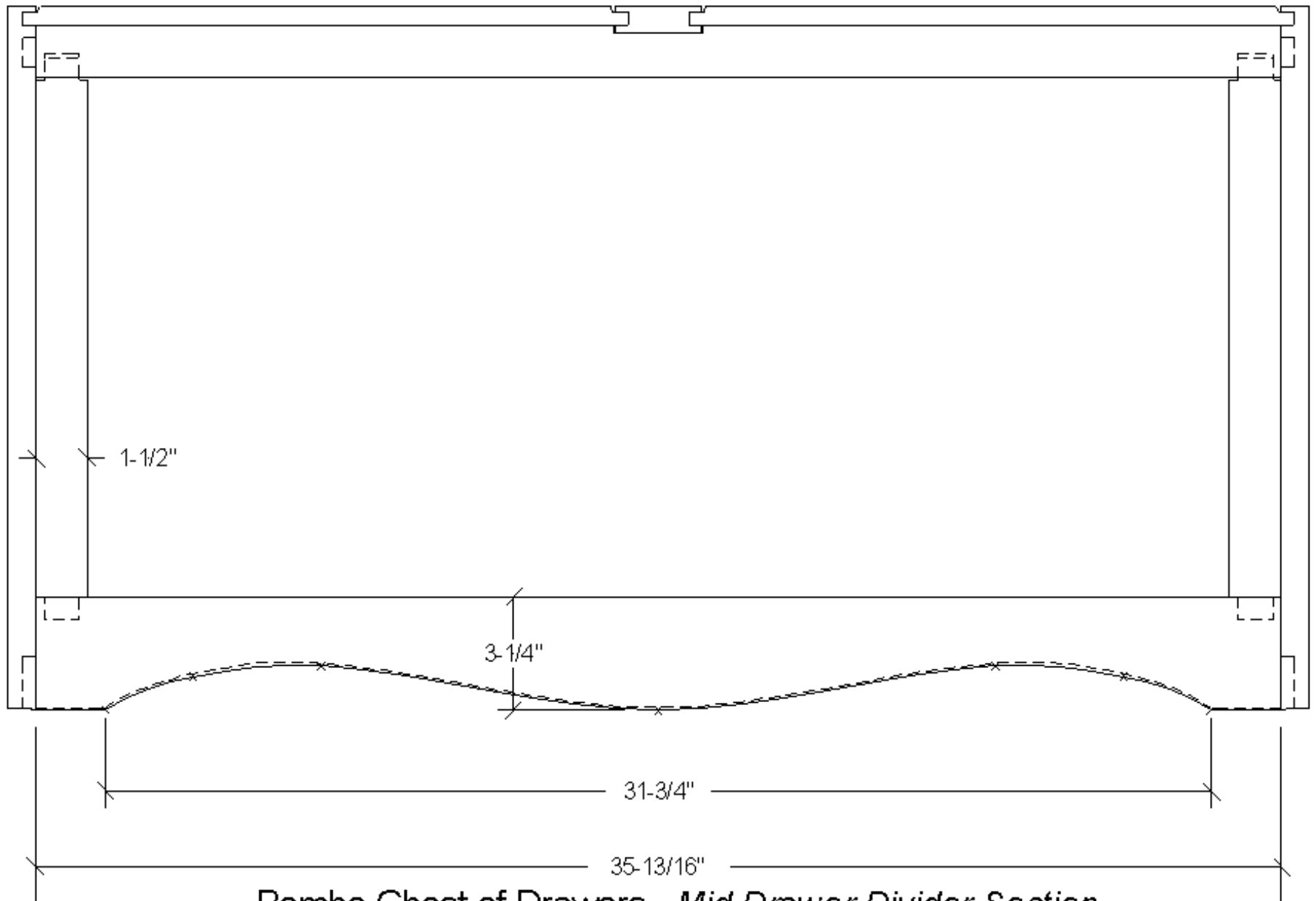
Bombe Chest of Drawers - *Top Drawer Divider Section*





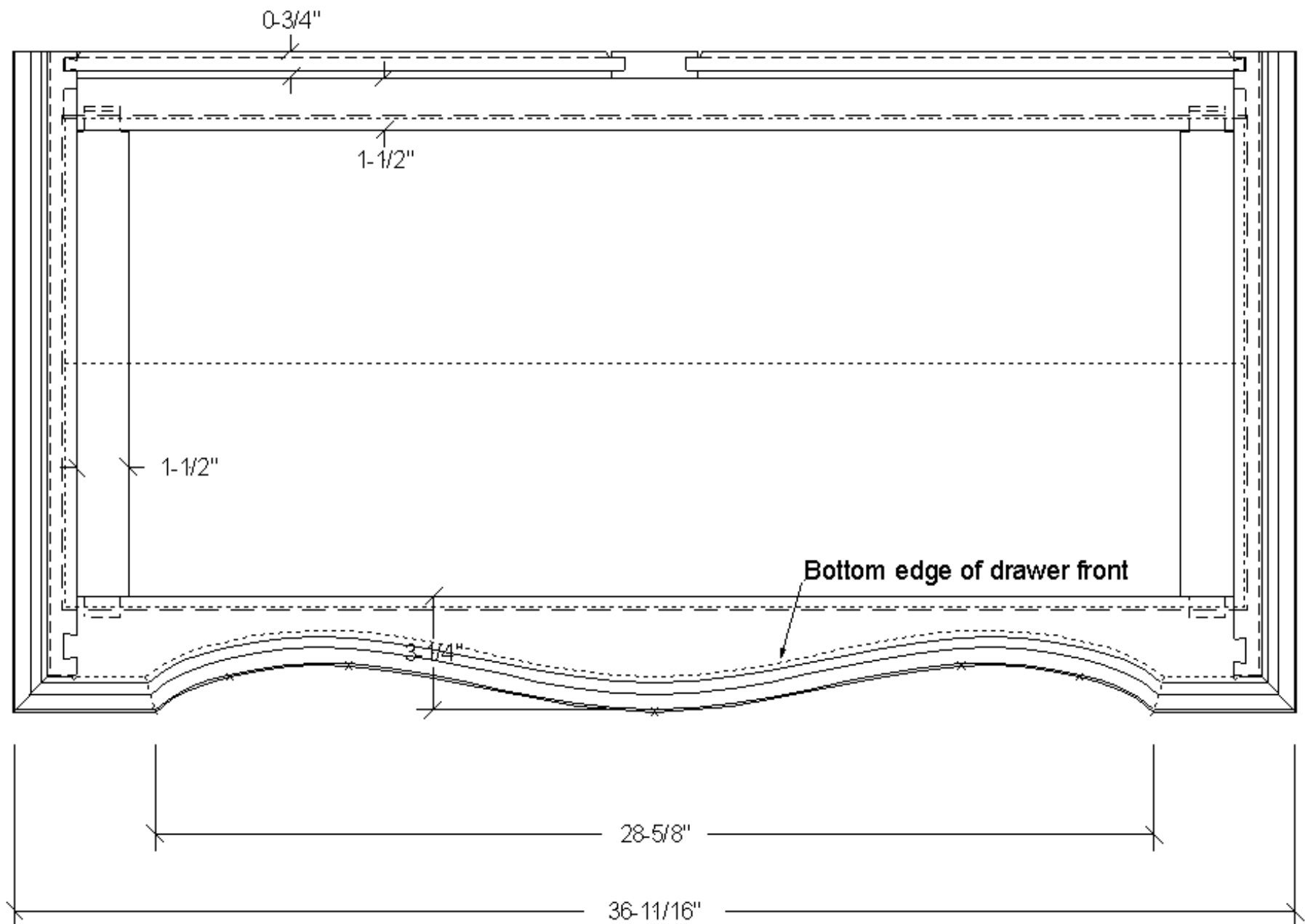
Bombe Chest of Drawers - 2nd Drawer Divider Section





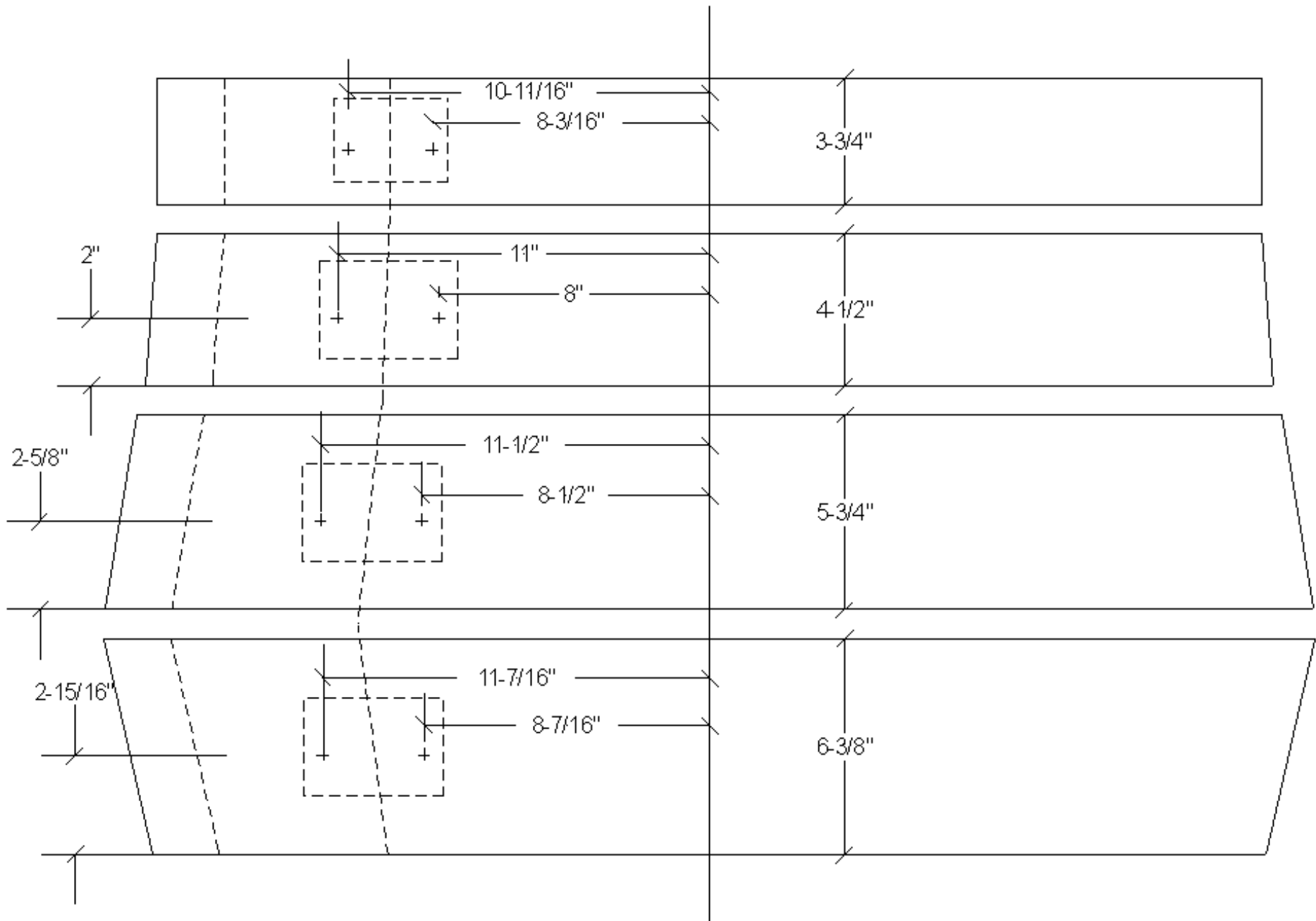
Bombe Chest of Drawers - *Mid Drawer Divider Section*



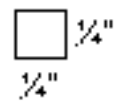
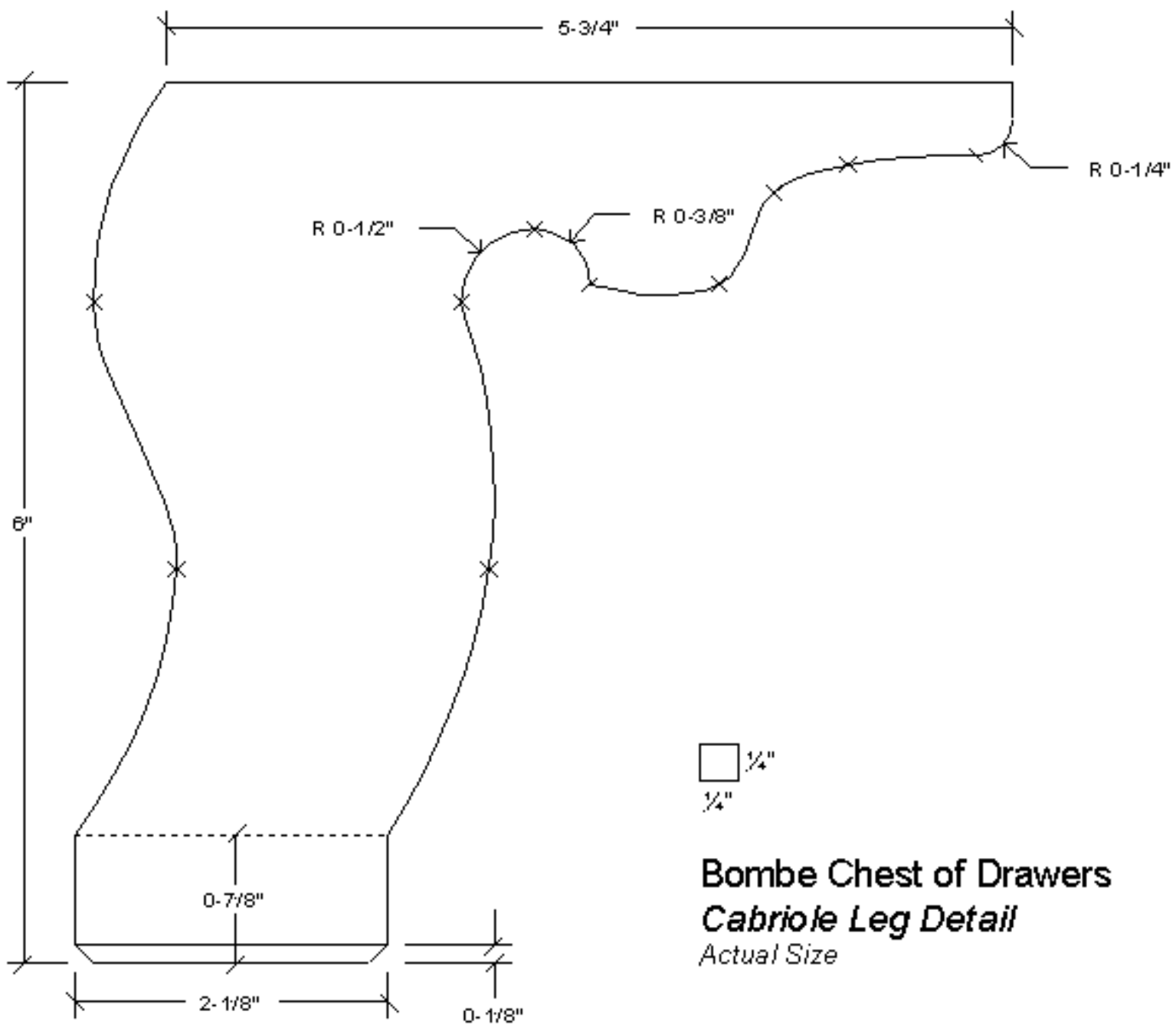
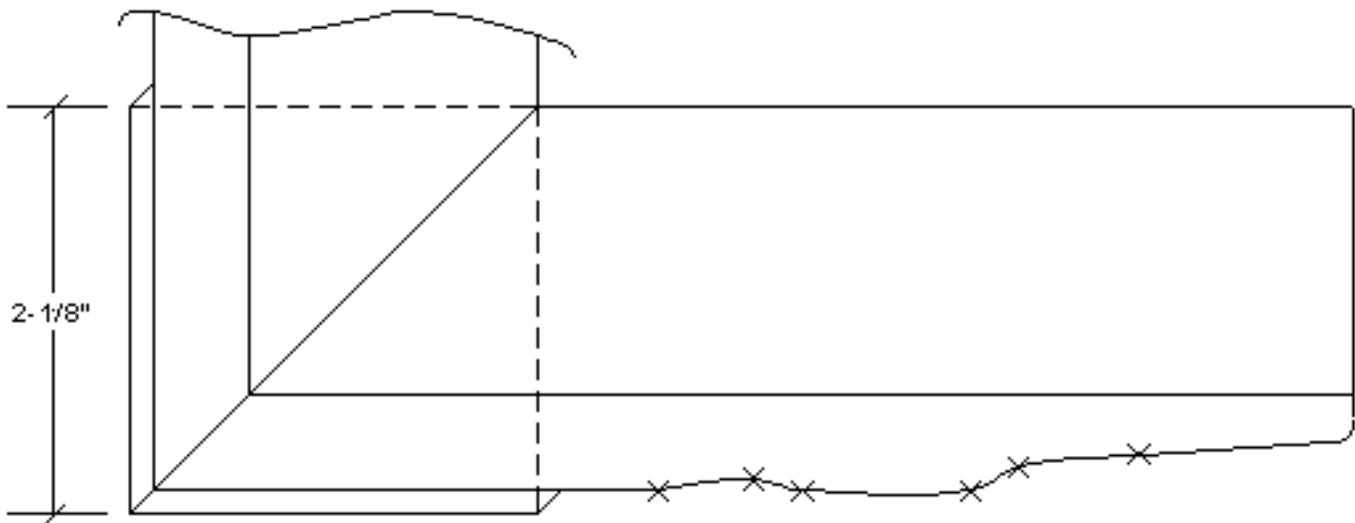


Bombe Chest of Drawers - *Bottom Drawer Divider Section*



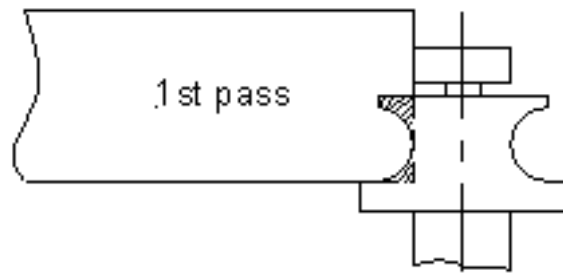


Bombe Chest of Drawers - *Drawer Pulls Placement Guide*



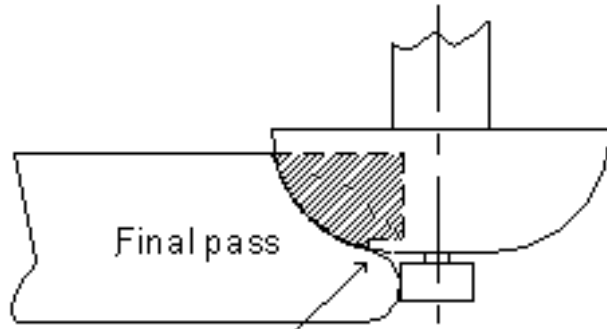
Bombe Chest of Drawers
Cabriole Leg Detail
Actual Size

Top Edge Profile Routing Sequence



1st pass

$3/8$ "BD Beading bit
(Whiteside 3254 or equiv.)

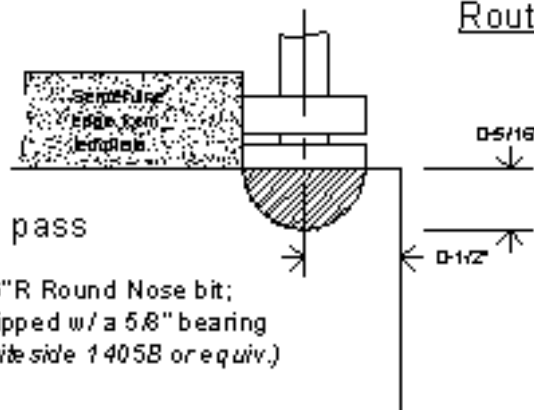


Final pass

$5/8$ "R Cove bit equipped w/ a $3/8$ " bearing
(Whiteside 1806 w/ B2 bearing or equiv.)

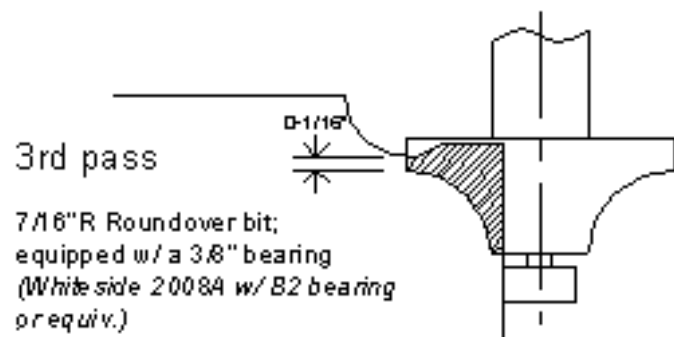
Matt @ targetofcme

Front Molding Profile Routing Sequence



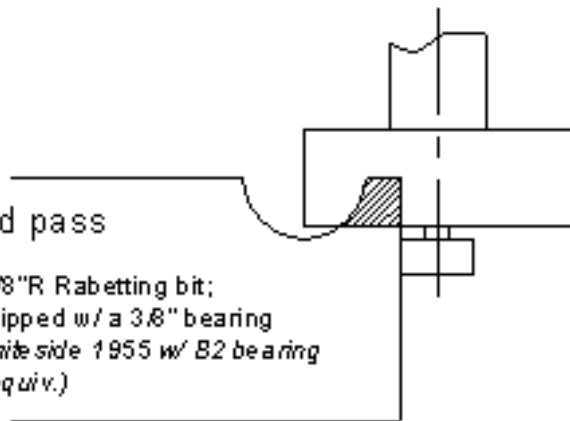
1st pass

$5/16$ "R Round Nose bit;
equipped w/ a $5/8$ " bearing
(White side 1405B or equiv.)



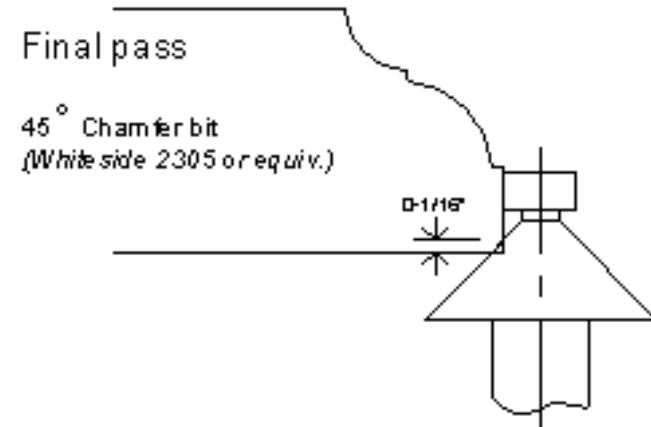
3rd pass

$7/16$ "R Roundover bit;
equipped w/ a $3/8$ " bearing
(White side 2008A w/ B2 bearing
or equiv.)



2nd pass

$1-3/8$ "R Rabetting bit;
equipped w/ a $3/8$ " bearing
(White side 1955 w/ B2 bearing
or equiv.)



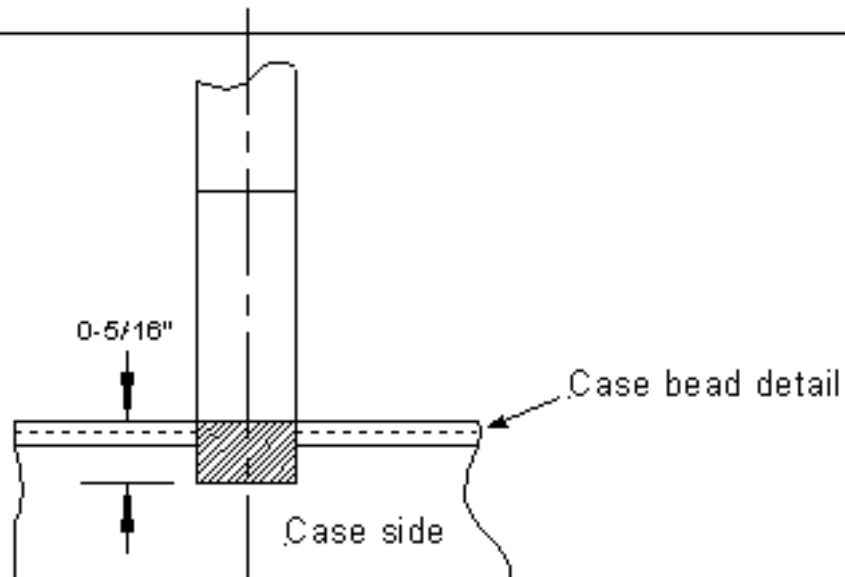
Final pass

45° Chamfer bit
(White side 2305 or equiv.)

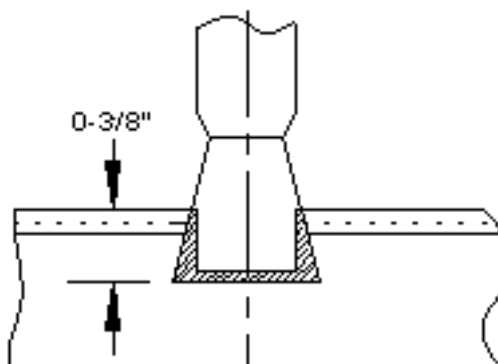
Bombe Chest of Drawers

Top Edge and Base Molding
Milling Sequence

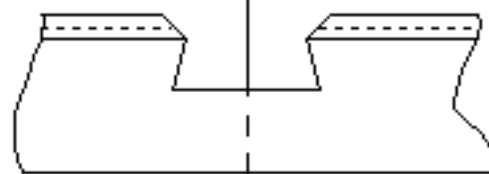
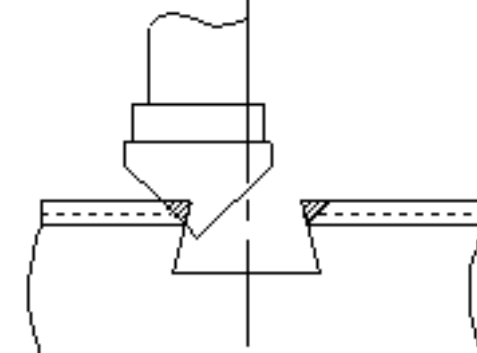
First Pass
1/2" straight bit
(Whiteside 1054 or equiv.)



2nd Pass
14 deg., 3/4" dovetail bit
(Whiteside D14-75 or equiv.)



Final Pass
45 deg. edging bit
(Whiteside 1504 or equiv.)



Bombe Chest of Drawers

Case Dovetail Milling Sequence